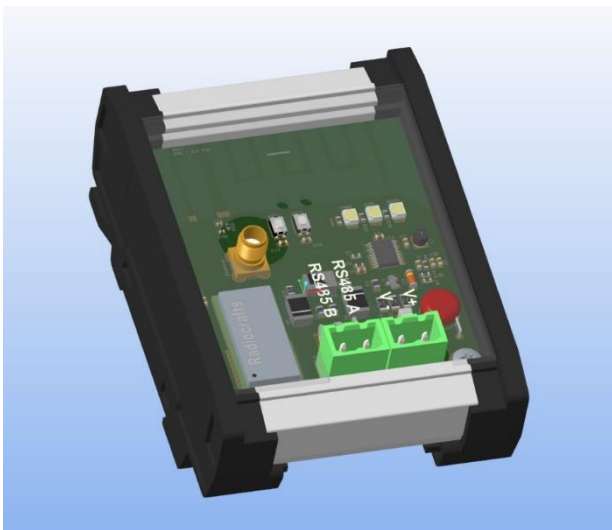




# RF.bloxx 101

Wireless RS485 Module



### Key features:



- Wireless RS 485 module, compatible to Gantner String.bloxx
- 868 Mhz ISM band
- The modules feature a fully embedded mesh application and multi-hop protocol stack with automatic network forming and self-healing features.
- 1 x RS485 fieldbus interface
- Update rate up to 1 Hz

<b>Data rate</b>	
transfer interval	Up to 1 Hz
Typic transfer interval	20 seconds update rate for 10 string.bloxx 116 EM
<b>Communication Interface</b>	
RS485	1
Default configuration	19200 8N1
USB	2
Protocols	transparent mode
Connection	0.25 mm <sup>2</sup> - 1.5 mm <sup>2</sup> push-in spring-cage connection
<b>RF module</b>	
Frequency	868 – 870 Mhz
Channels	18
Max TX power	27
Sensitivity 1.2/ 100 kbit/s	-109 / -96
Temp. range	-40 to +85
<b>Configuration Interface</b>	
RS485	terminal
<b>Power Supply</b>	
Power supply	18 up to 36 VDC, overvoltage and overload protection
Power consumption	approx. 0.6 W
<b>Environmental</b>	
Operating temperature	-40 °C up to +55 °C
Storage temperature	-40 °C up to +85 °C
Relative humidity	5 % up to 95 % at 50 °C, non-condensing
<b>Mechanical</b>	
Case	Polyamide/PA
Dimensions (H x W x D)	95x65x50 mm
Weight	approx. 90 g
Mounting	DIN rail mounting (EN 50022)